

Persistent Inequalities:

*A Demographic and Socioeconomic Profile of Puerto Ricans
and Latinos in Connecticut, 2000-2022*

BY Luis Palomino and Charles R. Venator-Santiago

About This Report

This report was prepared at the behest of Representative Juan R. Candelaria (D-NH/HD 95) and the Hispanic Federation for the 10th Annual Latino Advocacy Day and Luncheon at the Capital, April 23, 2024. The report provides a comparative demographic and socio-economic profile of Puerto Ricans and Latinos in the state of Connecticut. The profile incorporates demographic, social, and economic variables. We use microdata from the American Community Survey. (1-year estimates) harmonized by IPUMS USA.

About the Authors

Luis Palomino is an economist and research assistant for the University of Connecticut Puerto Rican Studies Initiative. He can be reached at luis.palomino@uconn.edu. Charles R. Venator-Santiago is the director of the Puerto Rican Studies Initiative. He can be reached at charles.venator@uconn.edu.

Population Count by Race and Ethnicity in Connecticut

Whereas the white population has been decreasing over time, all other race and ethnic groups in Connecticut are growing at a significant pace. The percentage of white population decreased by 16.9 percentage points or from 78.8% in 2000 to 62% in 2022. The percentage of black or African American population increased by 2.2 percentage points or from 7.6% in 2000 to 9.7% in 2022. The percentage of Puerto Rican population increased by 2 percentage points or from 6.2% in 2000 to 8.2% in 2022. The Hispanic or Latino population (without Puerto Rican) increased by 5.9 percentage points or from 4.1% in 2000 to 10% in 2022. The percentage of Asian population increased by 3.5 percentage points or from 2.2% in 2000 to 5.7% in 2022. **Since 2000, the combined population growth of the Puerto Ricans and Hispanic or Latino population outpaced the growth of other race and ethnic groups in Connecticut.**

Table 1: Population Count by Race and Ethnicity in Connecticut, 2000-2022

| | 2000 | 2005 | 2010 | 2015 | 2020 | 2022 |
|----------------------------------------------------|-----------|-----------|-----------|-----------|-----------|-----------|
| Population count (Persons) | | | | | | |
| Total Population | 3,294,802 | 3,365,768 | 3,577,073 | 3,590,886 | 3,561,894 | 3,626,205 |
| White | 2,597,679 | 2,534,555 | 2,540,845 | 2,438,734 | 2,288,988 | 2,247,625 |
| Black or African American | 249,560 | 295,975 | 335,261 | 359,405 | 348,713 | 353,268 |
| Puerto Rican | 203,131 | 201,445 | 266,122 | 276,275 | 281,038 | 295,794 |
| Hispanic or Latino (without Puerto Rican) | 133,848 | 171,273 | 215,426 | 278,086 | 336,776 | 363,018 |
| Asian | 72,735 | 114,620 | 153,532 | 180,980 | 189,986 | 207,798 |
| Pacific Islander, American Indian or Alaska Native | 5,564 | 8,862 | 6,421 | 6,881 | 5,400 | 5,743 |
| Population Percentage (%) | | | | | | |
| White | 78.8 | 75.3 | 71.0 | 67.9 | 64.3 | 62.0 |
| Black or African American | 7.6 | 8.8 | 9.4 | 10.0 | 9.8 | 9.7 |
| Puerto Rican | 6.2 | 6.0 | 7.4 | 7.7 | 7.9 | 8.2 |
| Hispanic or Latino (without Puerto Rican) | 4.1 | 5.1 | 6.0 | 7.7 | 9.5 | 10.0 |
| Asian | 2.2 | 3.4 | 4.3 | 5.0 | 5.3 | 5.7 |
| Pacific Islander, American Indian or Alaska Native | 0.2 | 0.3 | 0.2 | 0.2 | 0.2 | 0.2 |

Source: American Community Survey (IPUMS USA). Own elaboration.

Socioeconomic Profile By Race and Ethnicity in Connecticut

When compared to other groups, Puerto Ricans historically experienced the highest rates of socioeconomic inequalities among all groups in Connecticut. Since 2000, Puerto Ricans have consistently had the lowest homeownership rates and highest rental rates in the state. Puerto Ricans have also had the lowest employment rates. Likewise, through this period, Puerto Ricans lived with the lowest median income among all groups. Puerto Ricans have also experienced the highest poverty rates. And Puerto Ricans have the second lowest educational attainment rate among all groups in Connecticut.

Table 2: Socioeconomic Profile by Race and Ethnicity in Connecticut, 2000-2022

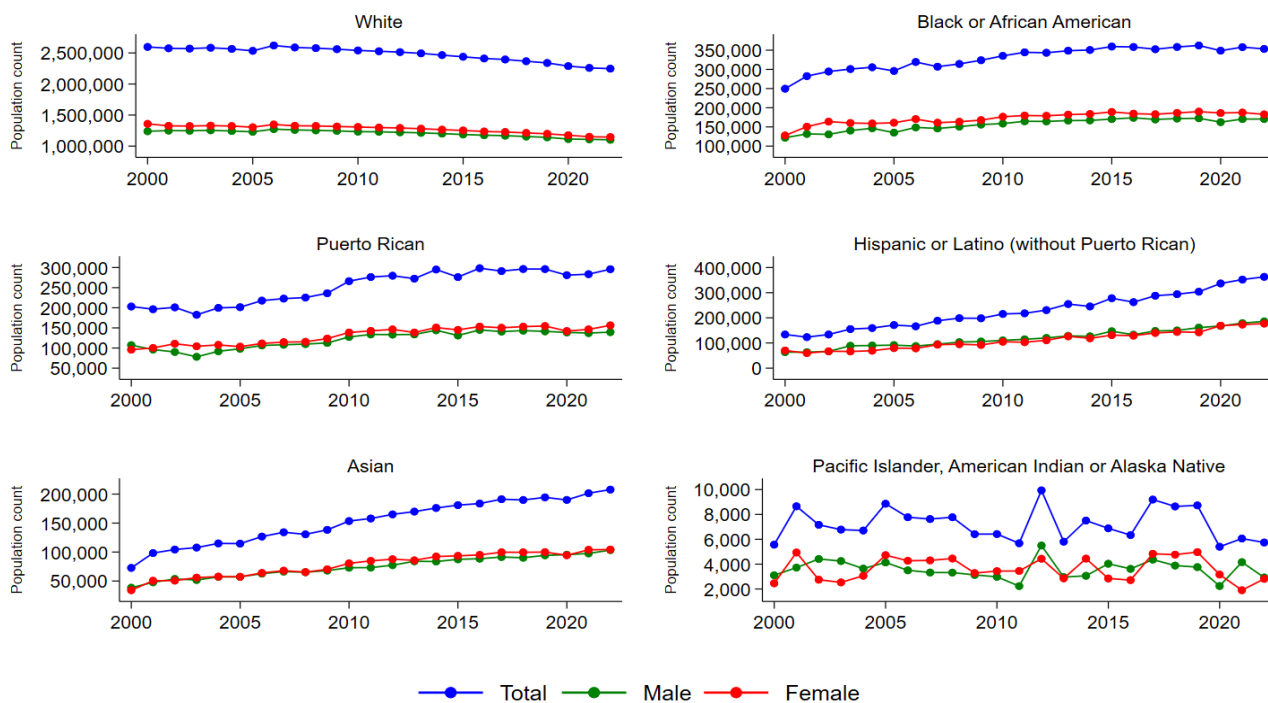
| | 2000 | 2005 | 2010 | 2015 | 2020 | 2022 |
|----------------------------------------------------|--------|--------|--------|---------|---------|---------|
| Dwelling Owner Rate (%) | | | | | | |
| White | 78.9 | 82.2 | 81.9 | 80.4 | 81.7 | 80.8 |
| Black or African American | 37.4 | 48.4 | 44.7 | 46.2 | 46.8 | 55.5 |
| Puerto Rican | 22.4 | 39.5 | 34.7 | 31.8 | 40.2 | 42.8 |
| Hispanic or Latino (without Puerto Rican) | 41.0 | 45.8 | 45.8 | 45.2 | 53.4 | 52.1 |
| Asian | 58.5 | 63.6 | 63.1 | 65.9 | 68.6 | 72.8 |
| Pacific Islander, American Indian or Alaska Native | 78.8 | 79.0 | 60.5 | 72.8 | 57.9 | 62.9 |
| Employment Rate (%) | | | | | | |
| White | 64.9 | 64.0 | 61.6 | 62.1 | 59.4 | 61.2 |
| Black or African American | 71.4 | 63.0 | 56.5 | 58.2 | 60.2 | 66.3 |
| Puerto Rican | 50.8 | 61.0 | 51.9 | 57.0 | 57.6 | 57.9 |
| Hispanic or Latino (without Puerto Rican) | 66.3 | 69.0 | 67.8 | 68.9 | 65.7 | 71.6 |
| Asian | 68.9 | 67.9 | 65.6 | 65.9 | 63.9 | 66.4 |
| Pacific Islander, American Indian or Alaska Native | 42.4 | 58.1 | 59.9 | 71.1 | 72.2 | 40.5 |
| Median Total Household Income (\$) | | | | | | |
| White | 65,200 | 80,360 | 88,700 | 102,000 | 115,400 | 120,500 |
| Black or African American | 38,900 | 49,000 | 52,000 | 57,900 | 65,600 | 83,500 |
| Puerto Rican | 28,000 | 40,000 | 38,800 | 42,900 | 53,300 | 60,000 |
| Hispanic or Latino (without Puerto Rican) | 54,605 | 53,500 | 61,200 | 65,000 | 77,600 | 88,000 |
| Asian | 65,000 | 80,600 | 80,000 | 101,201 | 130,000 | 128,000 |
| Pacific Islander, American Indian or Alaska Native | 40,800 | 62,000 | 75,300 | 80,000 | 101,000 | 65,800 |
| Poverty Rate (%) | | | | | | |
| White | 4.0 | 4.1 | 5.3 | 5.1 | 4.4 | 5.5 |
| Black or African American | 15.3 | 18.2 | 18.6 | 17.2 | 17.3 | 13.1 |
| Puerto Rican | 30.0 | 26.2 | 26.8 | 26.5 | 23.3 | 21.0 |
| Hispanic or Latino (without Puerto Rican) | 14.6 | 11.8 | 13.3 | 19.4 | 15.2 | 12.8 |
| Asian | 9.6 | 8.1 | 8.1 | 6.1 | 7.9 | 8.6 |
| Pacific Islander, American Indian or Alaska Native | 10.7 | 5.4 | 12.1 | 7.2 | 4.2 | 29.2 |
| Educational Attainment - College (%) | | | | | | |
| White | 44.3 | 46.5 | 49.4 | 52.9 | 57.7 | 56.6 |
| Black or African American | 28.2 | 25.9 | 32.9 | 37.8 | 40.4 | 41.0 |
| Puerto Rican | 14.1 | 17.9 | 17.9 | 23.1 | 23.4 | 25.9 |
| Hispanic or Latino (without Puerto Rican) | 24.2 | 24.3 | 26.2 | 31.3 | 34.5 | 32.6 |
| Asian | 47.0 | 58.7 | 51.4 | 58.0 | 60.1 | 59.6 |
| Pacific Islander, American Indian or Alaska Native | 36.2 | 42.1 | 46.8 | 56.4 | 39.9 | 21.9 |

Source: American Community Survey (IPUMS USA). Own elaboration.

Population Trends in Connecticut by Race, Ethnicity, and Gender

In the period 2000-2022, the white population showed negative or declining population growth trends, while the other population groups showed positive growth trends. The female population is slightly larger than the male population, but the trends are similar to the total population. The white population decreased by 13.47% or from 2,597,679 in 2000 to 2,247,625 in 2022. The Black or African American population increased by 41.55% or from 249,560 in 2000 to 353,268 in 2022. The Puerto Rican population increased by 45.6% or from 203,131 in 2000 to 295,794 in 2022. The Hispanic or Latino population without Puerto Ricans increased by 171.2% or from 133,848 in 2000 to 363,018 in 2022. The Asian population increased by 185.7% or from 72,735 in 2000 to 207,798 in 2022. **The combined Hispanic or Latino population growth significantly outpaced the Puerto Rican population growth in the state between 2000 and 2022. Puerto Rican and Hispanic or Latina population growth slightly outpaced male population growth.**

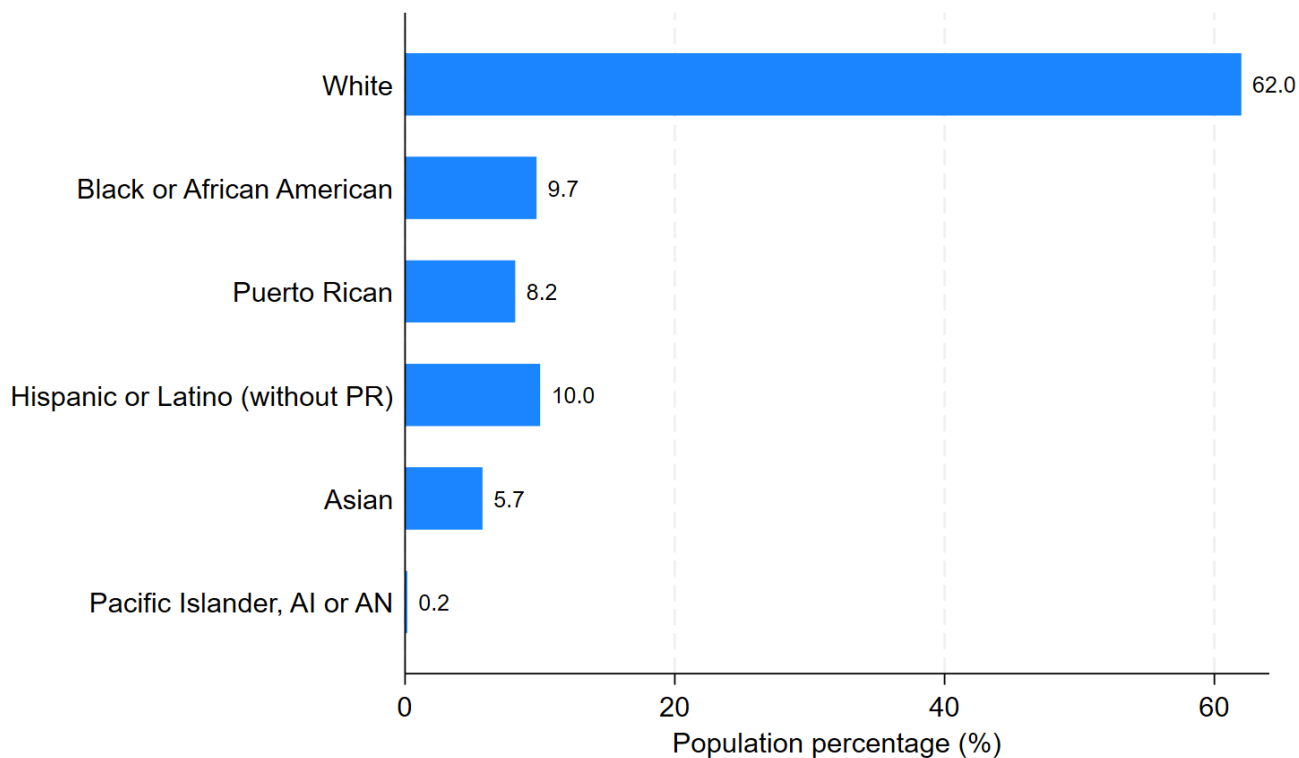
Figure 1a: Population Trends in Connecticut by Race, Ethnicity, and Gender, 2000-2022



Source: American Community Survey (IPUMS USA). Own elaboration.

In 2022, 62% of the total population was white, 10% was Hispanic or Latino (without Puerto Rican), 9.7% was Black or African American, 8.2% was Puerto Rican, and 5.7% was Asian. **Puerto Ricans and Hispanic or Latinos are the second largest ethnic group in the state of Connecticut, accounting for about a fifth of the state’s population.**

Figure 1b: 2022 Population Profile of Connecticut by Race and Ethnicity

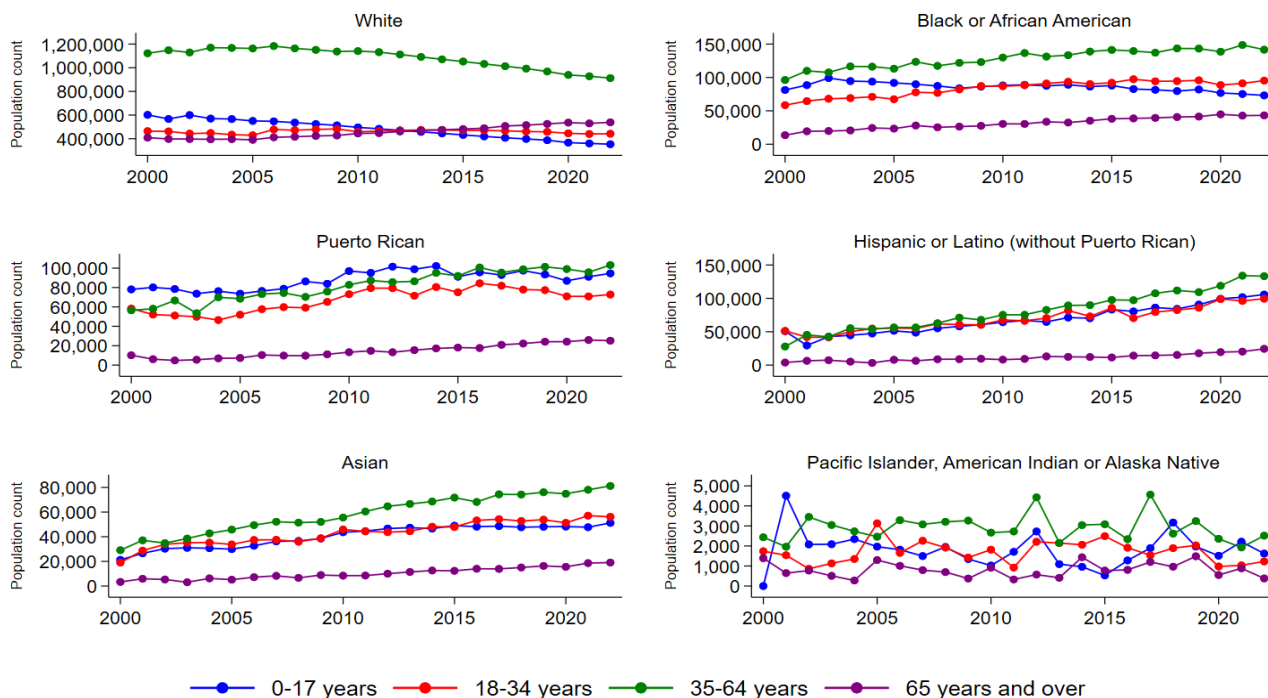


Source: American Community Survey (IPUMS USA). Own elaboration.

Population Trends by Race, Ethnicity, and Age Group in Connecticut

During the period of 2000-2022, the most significant proportion of population growth was between 35 and 64 years old. In the case of whites, we can see a decline in the 35-64 age group and an increase in the 65 and over age group. While the white population showed a decline in growth trends, other population groups showed positive growth trends. More importantly, whereas the second largest white population growth was that of 65 and older, this was the lowest age group for all non-white populations. In addition, unlike other population groups, the second largest population growth among Puerto Ricans and Hispanic or Latinos was that of the 0-17 years population. **These growth patterns suggest that between 2000 and 2022, the most significant population growth in Connecticut among Puerto Ricans and Hispanic or Latinos has been both between two age groups, namely the 0-17 and the 35 and 64 populations. However, in the case of Hispanics or Latinos, there was a significant growth in 18-4 population. Stated differently, the bulk of population growth among Puerto Ricans tends to hover between potential retirees and a young potential labor force. In the case of Hispanics or Latinos, we are seeing a significant growth in the main labor force ages.**

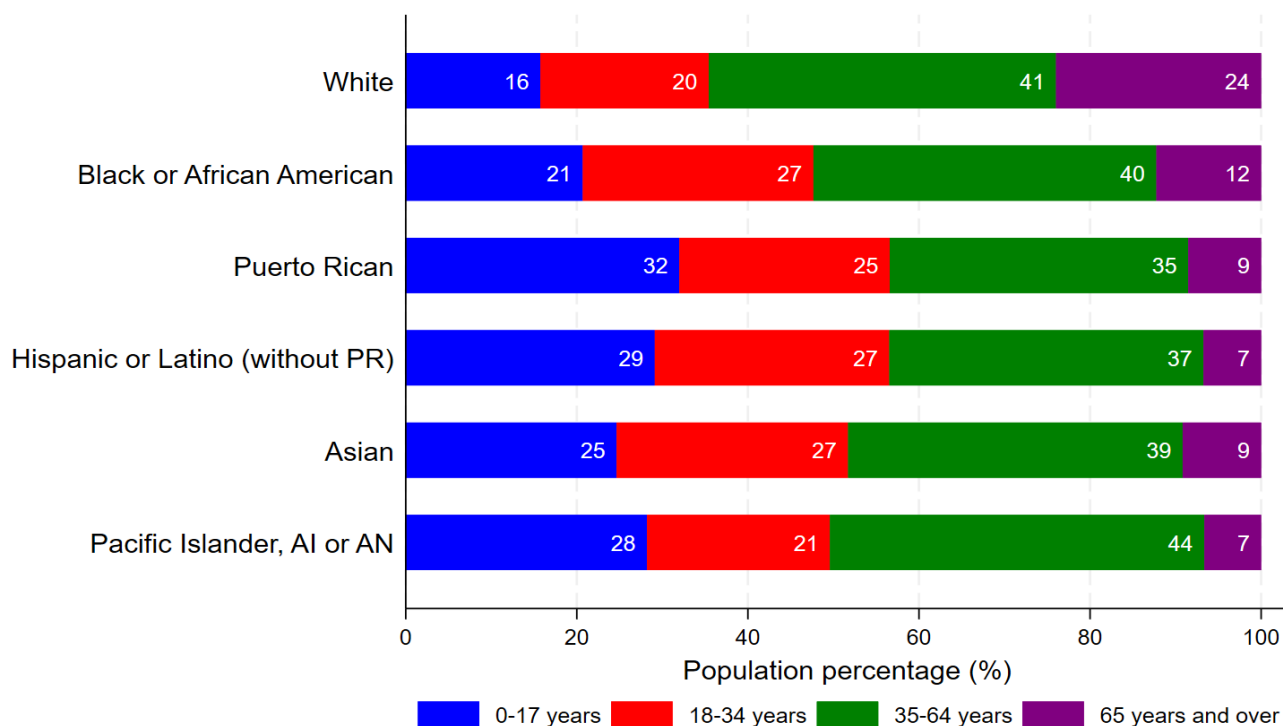
Figure 2a: Population Trends by Race, Ethnicity, and Age Groups in Connecticut, 2000-2022



Source: American Community Survey (IPUMS USA). Own elaboration.

In 2022, the percentage of the combined Puerto Rican and Hispanic or Latino groups between the ages of 0-17 and 18-34 was the largest in the state. In 2022, 16% of the white population was between 0 and 17 years old, compared with 32% of the Puerto Rican population and 29% of the Hispanic or Latino population (without Puerto Ricans). In contrast, 24% of the white population was 65 years old compared with 9% of the Puerto Rican population and 7% of the Hispanic or Latino population (without Puerto Ricans). **This data suggests that the majority of Puerto Ricans and Hispanic or Latinos are young and entering the labor force at a higher rate than other groups in the state.**

Figure 2a: Population Trends by Race, Ethnicity, and Age Groups in Connecticut, 2000-2022

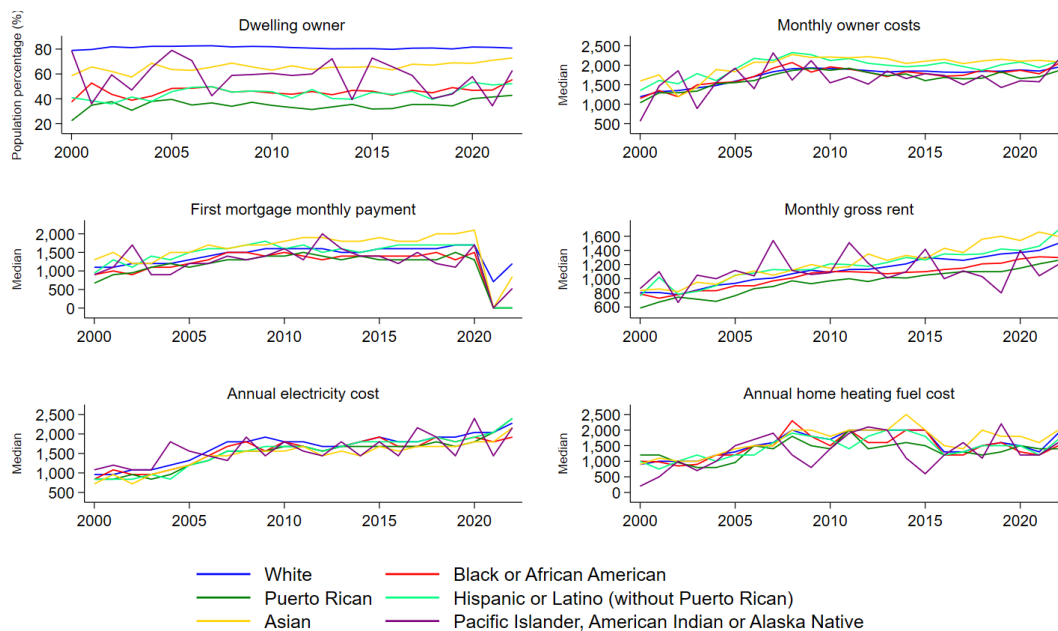


Source: American Community Survey (IPUMS USA). Own elaboration.

Trends in Housing Characteristics by Ethnicity in Connecticut

Puerto Ricans and Hispanic or Latinos experienced more housing inequalities than the other populations in the state of Connecticut between 2000-2022. The most significant proportion of the dwelling or homeowner population is primarily white, followed by the Asian population, while the lowest percentage of the dwelling or housing owner population is Puerto Rican and Hispanic or Latino (without Puerto Rican). **Although Puerto Rican and Hispanic or Latino homeownership rates grew between 2000 and 2022, both groups have consistently experienced the lowest homeownership rates in the Connecticut.** The majority of Puerto Ricans and Hispanic or Latinos are renters. **Puerto Ricans and Hispanic or Latinos experienced the highest monthly gross rent increase of all populations in the state. The monthly gross rent increased for the white population by 86%, for Black or African Americans by 65%, for Puerto Ricans by 115%, for the Hispanic or Latino population (without Puerto Ricans) by 123%, and for Asians by 91%.** Annual electricity cost of the white population increased by 137%, for Black or African Americans by 128%, for Puerto Ricans by 185%, for the Hispanic or Latino population (without Puerto Ricans) by 185%, and for Asians by 200%.

Figure 3a: Trends in Housing Characteristics by Race and Ethnicity in Connecticut, 2000-2022

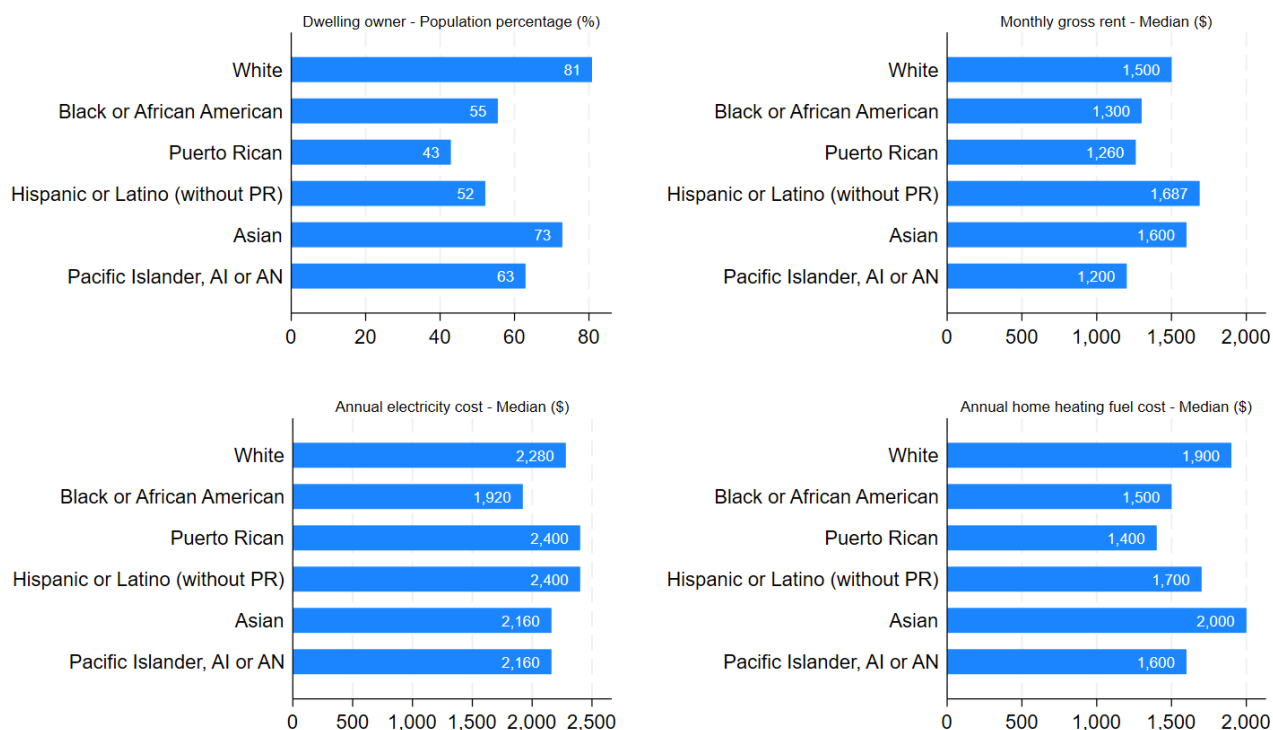


Source: American Community Survey (IPUMS USA). Own elaboration.

Notes: The median is the middle number in a sorted -ascending or descending- list of numbers; it is the point above and below which half (50%) of the observed data falls, representing the data’s midpoint. Hispanic or Latino includes the Puerto Rican population.

In 2022, 81% of the white population owned a home compared to 73% of Asians, 55% of Black or African Americans, 52% of Hispanic or Latino population (without Puerto Ricans), and 43% of Puerto Ricans. Also, white, and Asian populations had higher heating fuel costs compared to Puerto Ricans and Black or African Americans. In contrast, Puerto Ricans and Hispanics or Latinos have higher annual electricity costs compared to other ethnic groups. **In 2022, Puerto Ricans and Hispanic or Latinos had the lowest homeownership and highest rental rates among all populations in the state of Connecticut.**

Figure 3b: Housing Characteristics by Race and Ethnicity in Connecticut, 2022



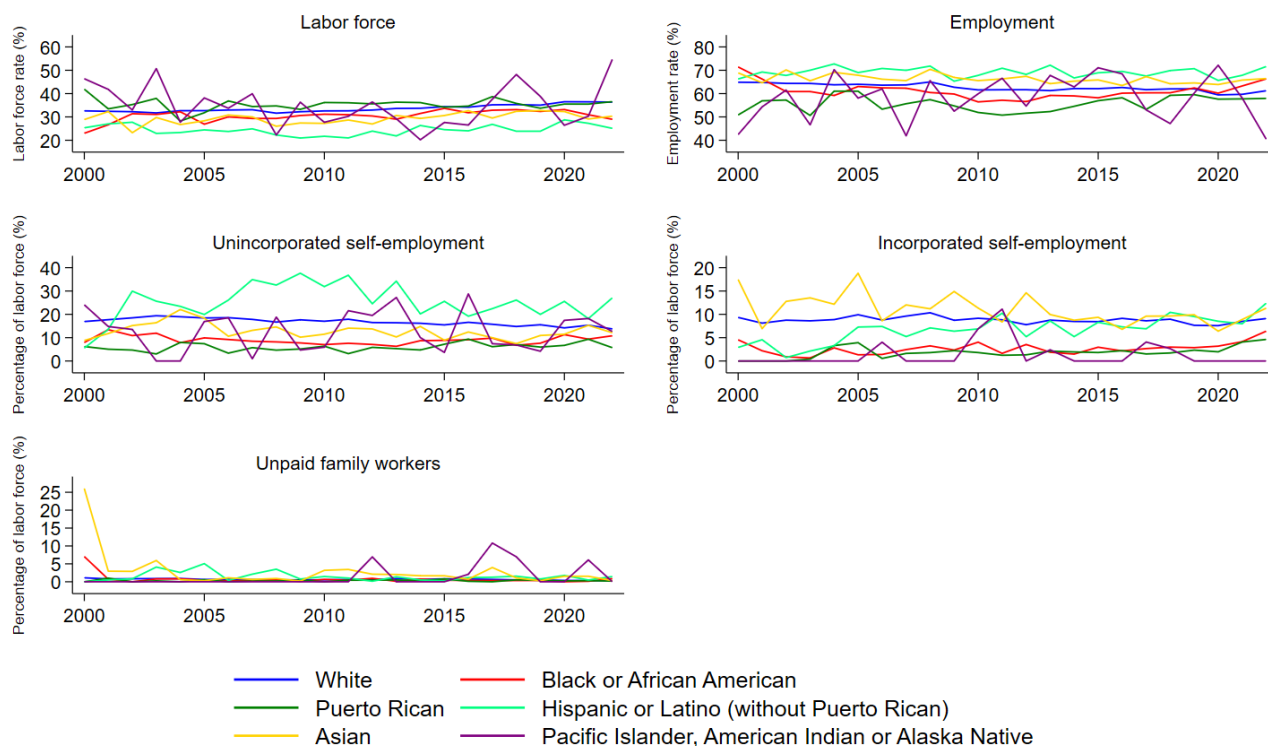
Source: American Community Survey (IPUMS USA). Own elaboration.

Notes: The median is the middle number in a sorted -ascending or descending- list of numbers; it is the point above and below which half (50%) of the observed data falls, representing the data’s midpoint. Hispanic or Latino includes the Puerto Rican population.

Trends in Employment Profile by Ethnicity in Connecticut

During the period between 2000 and 2022, the highest employment rates corresponded to the Hispanic or Latino (without Puerto Ricans), followed by Asian, and white populations. **In contrast, Puerto Ricans experienced the lowest employment rates and the lowest incorporated self-employment and unincorporated self-employment rates.**

Figure 4a: Trends in Employment Profile by Race and Ethnicity in Connecticut, 2000-2022

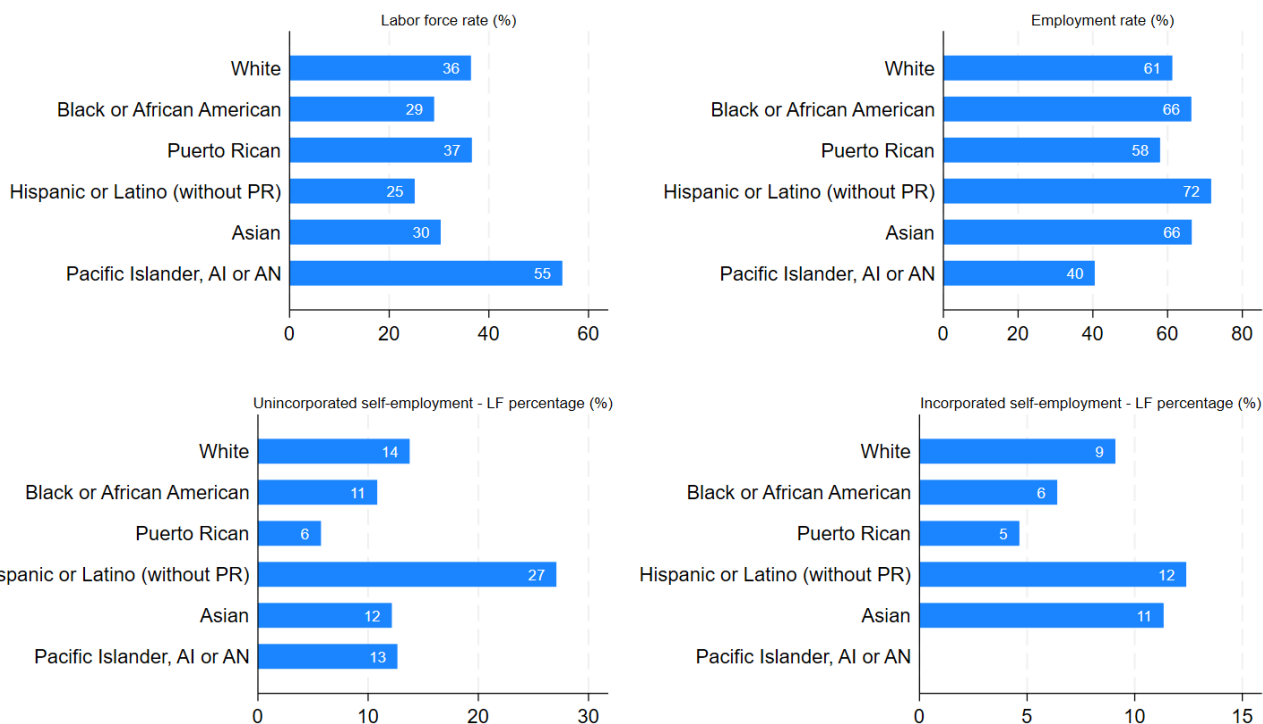


Source: American Community Survey (IPUMS USA). Own elaboration.

Notes: The labor force corresponds to the sum of employed and unemployed persons. Self-employed people are those who work for profit or fees in their own business, profession, trade, or farm. Incorporated self-employment refers to people who work for themselves in corporate entities; the incorporated self-employed are paid employees of their corporation. Unincorporated self-employment refers to people who work for themselves in other legal entities.

In 2022, the percentage of the white population in the labor force was 36%, compared to 37% of Puerto Ricans, 30% of Asians, 29% of Black or African Americans, and 25% Hispanic or Latino population (without Puerto Ricans). The employment rate was 58% for the Puerto Ricans, 61% for the white population, 66% for Asians and Black or African Americans, and 72% for Hispanic or Latino (without PR). **In 2022, Puerto Ricans experienced the lowest employment rates of any group in Connecticut. Puerto Ricans were also the least likely to be self-employed.**

Figure 4b: Employment Profile by Race and Ethnicity in Connecticut, 2022



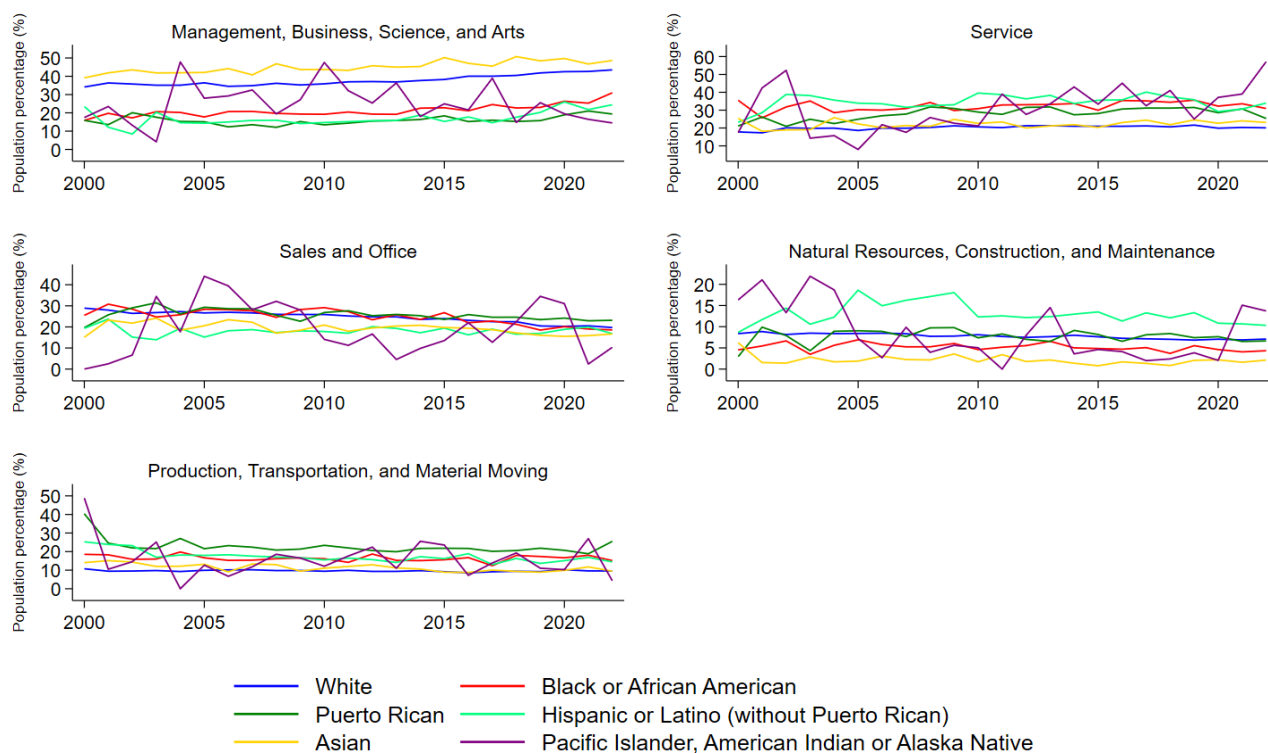
Source: American Community Survey (IPUMS USA). Own elaboration.

Notes: The labor force corresponds to the sum of employed and unemployed persons. Self-employed people are those who work for profit or fees in their own business, profession, trade, or farm. Incorporated self-employment refers to people who work for themselves in corporate entities; the incorporated self-employed are paid employees of their corporation. Unincorporated self-employment refers to people who work for themselves in other legal entities.

Trends in Occupation Profile by Race and Ethnicity in Connecticut

Between 2000 and 2022, White and Asian populations were primarily working in management, business, science, and the arts. In contrast, Puerto Ricans and the Hispanic or Latinos were primarily working in sales and office jobs. Historically, Hispanics or Latinos were also more likely to work in service, and natural resources, construction, and maintenance occupations.

Figure 5a: Trends in Occupation Profile by Race and Ethnicity in Connecticut, 2000-2022

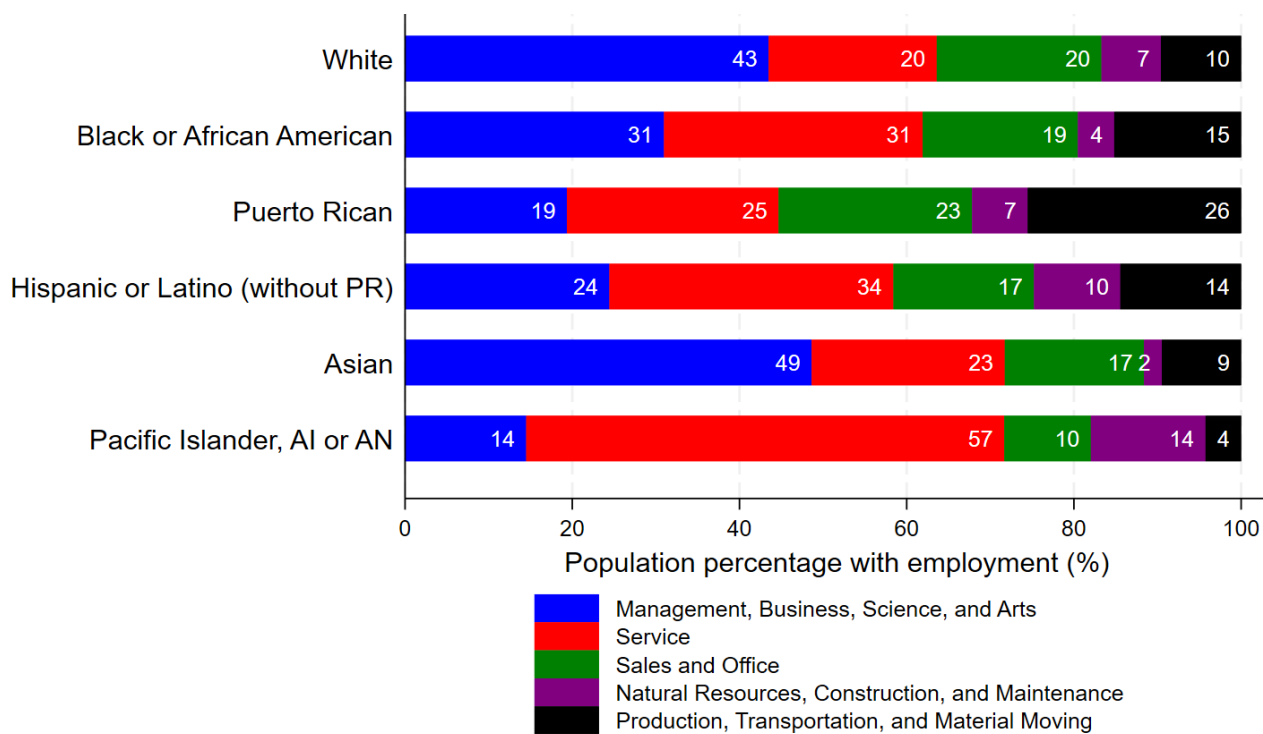


Source: American Community Survey (IPUMS USA). Own elaboration.

Notes: To see the occupations list in each category, visit <https://usa.ipums.org/usa/volii/occ2018.shtml>.

In 2022, 43% of the white population labored in management, business, science, and arts occupations compared to 49% of Asians, 19% of Puerto Ricans, and 24% of the Hispanic or Latino population. In contrast, 26% of Puerto Ricans had occupations in production, transportation, and material moving compared with 10% of the white population and 9% of Asians. **Of all the populations in Connecticut, Puerto Ricans were the least likely to work in managerial, business, science, and the arts.**

Figure 5b: Occupation Profile by Race and Ethnicity in Connecticut, 2022



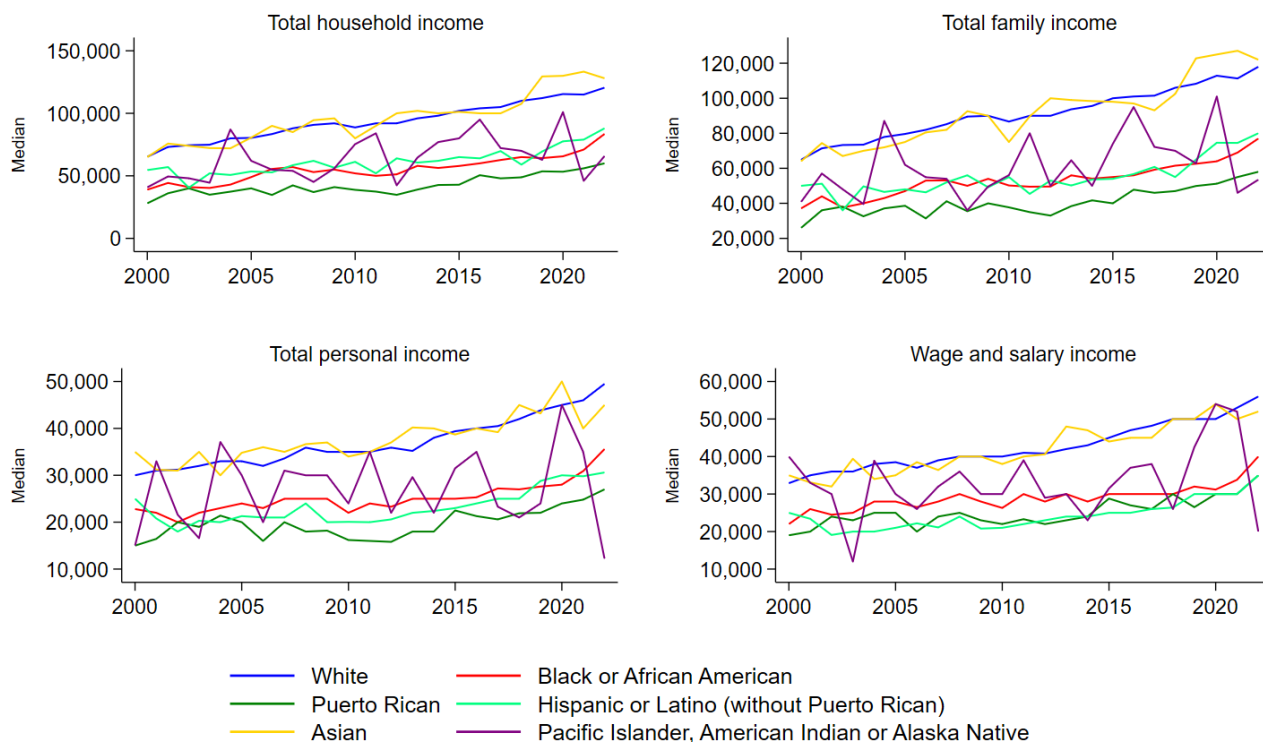
Source: American Community Survey (IPUMS USA). Own elaboration.

Notes: To see the occupations list in each category, visit <https://usa.ipums.org/usa/volii/occ2018.shtml>.

Trends in Income Profile by Ethnicity in Connecticut

Although the income of all racial and ethnic groups in Connecticut grew between 2000 and 2022, clear inequalities remained throughout this period. The median income of whites and Asians was consistently and significantly higher than the median income of Puerto Ricans and Hispanic or Latinos throughout this period. Puerto Ricans and Hispanic or Latinos earned the lowest wage and salary incomes. **Between 2000 and 2022, Puerto Rican median incomes were the lowest in every category in the state of Connecticut.**

Figure 6a: Trends in Income Profile by Race and Ethnicity in Connecticut, 2000-2022

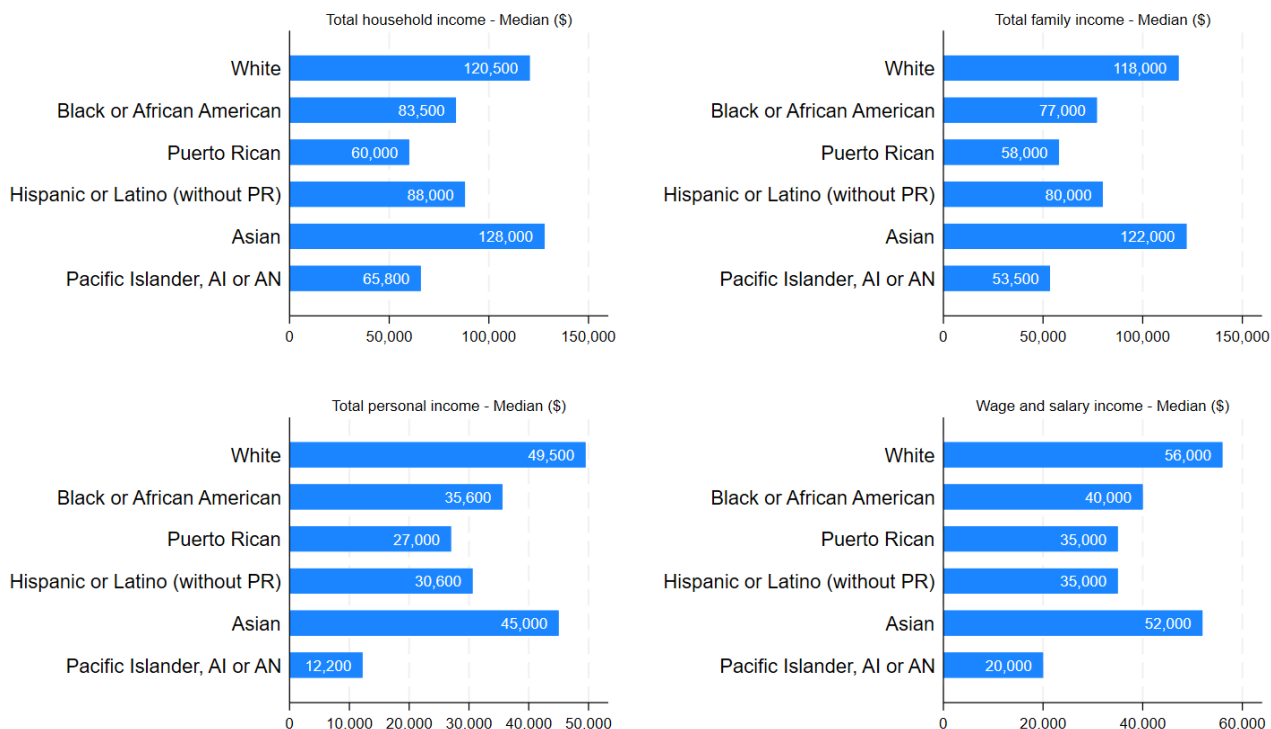


Source: American Community Survey (IPUMS USA). Own elaboration.

Notes: The median is the middle number in a sorted -ascending or descending- list of numbers; it is the point above and below which half (50%) of the observed data falls, representing the data’s midpoint. Hispanic or Latino includes the Puerto Rican population.

In 2022, white Americans and Asians had the largest median incomes, while Puerto Rican median incomes were the lowest of all groups. In most income categories, Puerto Ricans were likely to earn almost half of what whites and Asians earned in Connecticut. **In 2022, Puerto Ricans and Hispanic or Latinos earned the lowest median wages and salaries in Connecticut.**

Figure 6b: Income Profile by Race and Ethnicity in Connecticut, 2022



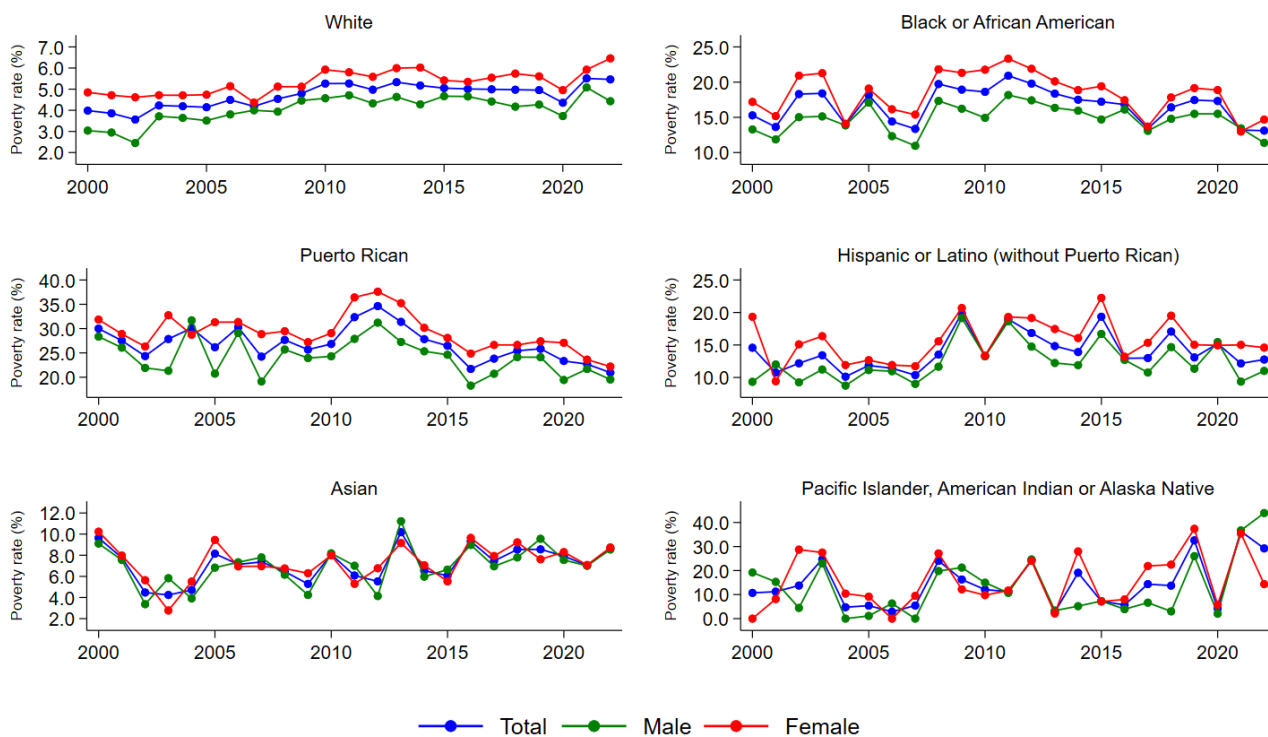
Source: American Community Survey (IPUMS USA). Own elaboration.

Notes: The median is the middle number in a sorted -ascending or descending- list of numbers; it is the point above and below which half (50%) of the observed data falls, representing the data’s midpoint. Hispanic or Latino includes the Puerto Rican population.

Trends in Poverty Rates by Race, Ethnicity, and Gender in Connecticut

Between 2000 and 2022, women in Connecticut, regardless of racial or ethnic difference, experienced higher rates of poverty than men. The poverty rate increased by 1.48 percentage points for whites (3% in 2000 and 4.4% in 2022). However, the poverty rate decreased by 2.2 percentage points for black or African Americans, by 9.1 percentage points for Puerto Ricans, by 1.8 percentage points for the Hispanic or Latino population (without Puerto Ricans), and by 1 percentage point for Asians. **Between 2000 and 2022, Puerto Ricans experienced the most significant decline in poverty among all populations in the state of Connecticut. However, Puerto Ricans, and Puerto Rican women in particular, experienced the highest rates of poverty of all groups in the state of Connecticut.**

Figure 7a: Trends in Poverty Rates by Race, Ethnicity, and Gender in Connecticut, 2000-2022

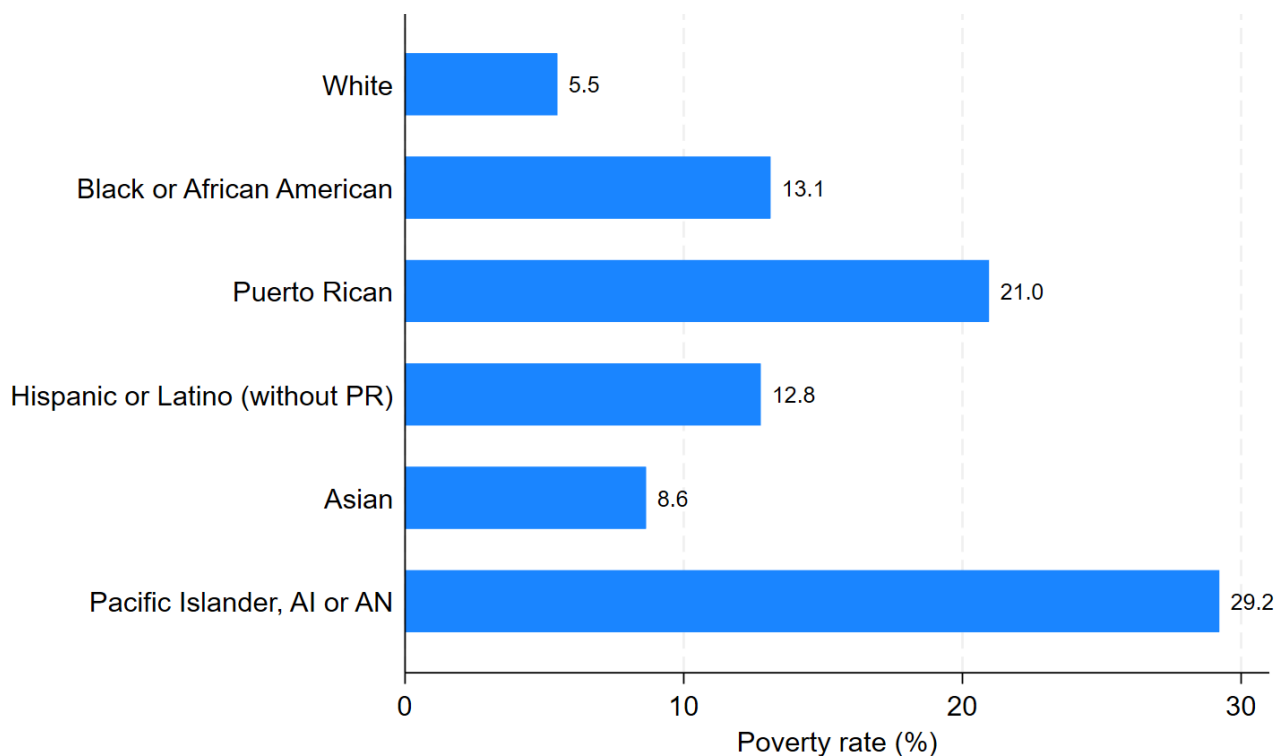


Source: American Community Survey (IPUMS USA). Own elaboration.

Notes: The poverty rate corresponds to the percentage of people whose poverty status is less than 100. Poverty status takes a minimum value of 1 and a maximum value of 501, where the lower value indicates a higher poverty level. Individuals whose family income is more than five times the appropriate poverty threshold receive a poverty status value of 501. Hispanic or Latino includes the Puerto Rican population.

In 2022, the poverty rate was 5.5% for the white population, 8.6% for Asians, 12.8% for the Hispanic or Latino population (without Puerto Ricans), 21% for Puerto Ricans. **In 2022, Puerto Ricans had the highest poverty rates of any racial or ethnic group in the state of Connecticut.**

Figure 7b: Poverty Rate by Race, Ethnicity, and Gender in Connecticut, 2022



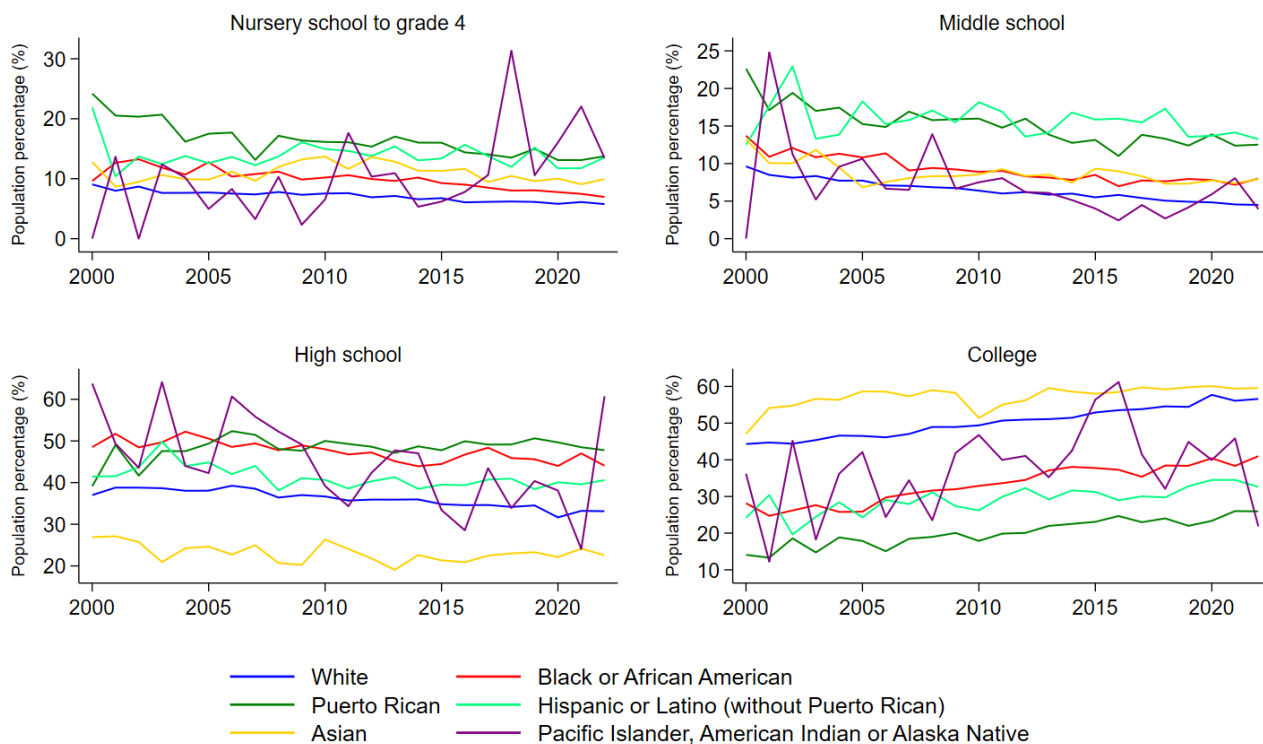
Source: American Community Survey (IPUMS USA). Own elaboration.

Notes: The poverty rate corresponds to the percentage of people whose poverty status is less than 100. Poverty status takes a minimum value of 1 and a maximum value of 501, where the lower value indicates a higher poverty level. Individuals whose family income is more than five times the appropriate poverty threshold receive a poverty status value of 501. Hispanic or Latino includes the Puerto Rican population.

Trends in Educational Attainment Profile by Race and Ethnicity in Connecticut

During the period of 2000 and 2022, whites and Asians had the highest college attainment rates, while Puerto Ricans and Hispanics or Latinos had the lowest. In contrast, Puerto Ricans and Hispanics or Latinos had the highest completion rates of nursery to 4 and middle school. The latter is consistent with the young median age of the Puerto Rican and Hispanic or Latino populations. **Between 2000 and 2022, Puerto Ricans had the lowest college completion rates of all populations in Connecticut.**

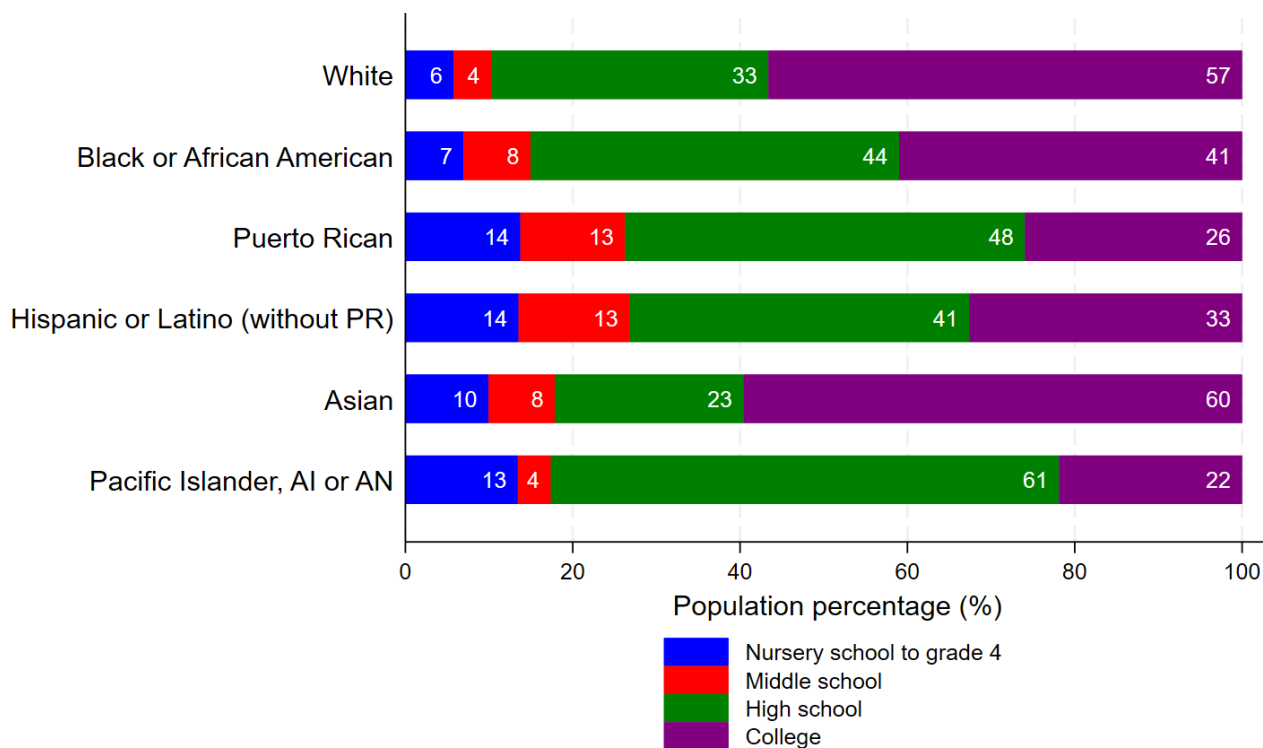
Figure 8a: Educational Attainment Profile by Race and Ethnicity in Connecticut, 2000-2022



Source: American Community Survey (IPUMS USA). Own elaboration.

In 2022, the college education attainment for Asians was 60% and 57% whites. In contrast, the college attainment rates for Puerto Ricans were 26% and 33% for the Hispanic or Latino population (without Puerto Ricans). **In 2022, Puerto Ricans (26%) had the lowest college attainment rates, followed Hispanics or Latinos (33%) in Connecticut.**

Figure 8b: Educational Attainment Profile by Race and Ethnicity in Connecticut, 2022



Source: American Community Survey (IPUMS USA). Own elaboration.

Conclusions

Since 2000, Puerto Ricans experienced the most significant socioeconomic inequalities of any race or ethnicity in the State of Connecticut. Puerto Ricans experienced negative rates in key socioeconomic indicators including housing, employment, occupation, income, poverty, and educational attainment. Inequalities in these areas are consistent between 2000 and 2022.

The combined Puerto Rican and Hispanic or Latino population is the largest growing population and labor force in the state of Connecticut. The majority white population is consistently aging out of the labor force and entering retirement ages, where they live with fixed incomes and higher socioeconomic needs. In contrast, the Puerto Rican and Hispanic or Latino population of the state tends to be younger. The Puerto Rican and Hispanic or Latino population is becoming the key labor force in the state of Connecticut.

A majority of Puerto Ricans and Hispanics or Latinos are more likely to rent apartments rather than own a home. When accounting for growing prices in the state's rental markets, as well as other related expenses (fuel and heating), Puerto Ricans and Hispanics or Latinos in the state tend to pay higher mortgage and rent burdens than other racial and ethnic groups in the state. Puerto Ricans in particular are less likely to accumulate wealth through home equity. Housing inequalities further affect the ability of Puerto Ricans to establish roots in a community and thus become more civically engaged. The housing conditions of Puerto Ricans are a key factor exacerbating the inequalities experienced by Puerto Ricans in the state of Connecticut.

Employment rates of Puerto Rican and Hispanic or Latino groups were significantly different. Puerto Ricans experience the highest rates of unemployment of any racial or ethnic group in the state of Connecticut. In 2022, only 58% of Puerto Ricans were employed. Puerto Ricans also had the lowest rates of self-employment of any group. In contrast, Hispanic or Latino groups had the highest rates of employment of any racial or ethnic group in the state.

Occupational rates of Puerto Ricans and Hispanics or Latinos were significantly different than those of the other racial or ethnic groups in Connecticut. Both Puerto Ricans and Hispanic or Latinos had the lowest rates of management, business, science, and the arts occupations. Puerto Ricans had the highest rates of service and office occupations. Hispanics or Latinos had the highest rates of employment in service jobs. This data suggests that Puerto Ricans were more likely to be employed in lower paying occupations.

Historically and in 2022, Puerto Ricans had the lowest median incomes of any racial or ethnic group in the state of Connecticut. Puerto Rican Total Household income was about half (\$60,000) of the income of whites (\$120,500) and Asians (\$128,000) and significantly lower than the Hispanic or Latino income (\$88,000). Likewise, Puerto Ricans had the lowest median Total Family (\$58,000) and Personal incomes (\$27,000). Median wage and salary incomes for Puerto Ricans (\$35,000) and Hispanics or Latinos (\$35,000) were also the lowest among all racial and ethnic groups in Connecticut. Coupled with the low rates of homeownership, which would enable the accumulation of equity, the majority of Puerto Ricans in Connecticut have been unable to accumulate significant wealth over time.

Although Puerto Ricans experienced a decline in poverty rates since 2000, rates of poverty among this population are the highest in the state. In particular, Puerto Rican women have experienced the highest rates of poverty in the state. In 2022, the Puerto Rican poverty rate (21%) was almost twice as high as that of Hispanic or Latinos (12.8%) and four times higher than that of whites (5.5%).

Finally, the educational attainment rates of Puerto Ricans further explain some of the inequalities that they experience in the state of Connecticut. Puerto Ricans, like Hispanics or Latinos, had the highest rates of students in 0-Middle School. These rates are indicative of the youth of the Puerto Rican and Hispanic or Latino population in the states. In the case of Puerto Ricans, in 2022, they had the highest high school (48%) completion rates of any group in the state. In contrast, Puerto Ricans also had the lowest college (26%) completion rates of any other racial or ethnic group in Connecticut. Lack of college educational attainment is one of the key components that can help explain occupational, income, and to some degree poverty rates.

In sum, we know that Puerto Ricans and Hispanics or Latinos are becoming the largest non-white labor force in the state. This is a population that is young and experiences significant inequalities in the state of Connecticut. In contrast, the white population is aging significantly and declining in growth. The state of Connecticut would benefit from addressing the various inequalities experienced by Puerto Ricans and Hispanic or Latinos. After all, historical data suggests that the Puerto Rican and Hispanics or Latinos are becoming the key labor force for the state of Connecticut. This is the time to start addressing these inequalities and enabling this labor force to succeed in the state of Connecticut.

Where Did We Get This Information From?

We use microdata from the American Community Survey (1 year) harmonized by IPUMS USA. Using microdata, we estimate the profile statistics of the Puerto Ricans in Connecticut. The profile incorporates demographic, social, and economic variables.

About Our Funding

The Puerto Rican Studies Initiative was initially funded by an American Rescue Plan Act grant awarded by the Connecticut General Assembly. It is currently funded by a grant from the Connecticut General Assembly, in collaboration with the Puerto Rican and Latino Legislative Caucus.

How To Cite This Report

2024. Luis Palomino and Venator-Santiago, Charles R. *Persistent Inequalities: A Demographic and Socioeconomic Profile of Puerto Ricans and Latinos in Connecticut, 2000-2022*. Storrs, Connecticut: University of Connecticut, Puerto Rican Studies Initiative.

The Puerto Rican Studies Initiative for Community Engagement and Public Policy (PRSI) is a research initiative seeking to document and support Puerto Ricans' vital economic, intellectual, and cultural contributions to Connecticut and provide research-based support for the development of public policies addressing the needs of Puerto Ricans in the State of Connecticut.

For more information, please visit our website:
<https://puerto-rican-studies-initiative.clas.uconn.edu/>

