

# HISTORICAL INCOME AND POVERTY PROFILE OF PUERTO RICAN MIGRANTS AND LATIN AMERICAN IMMIGRANTS IN CONNECTICUT, 2000-2021

Data Report/DR 2023-4 | September 2023

**Luis Palomino & Charles R. Venator-Santiago**  
**University of Connecticut**

## ABOUT THIS REPORT

The objective of this report is to show the trends of the income and poverty profile of the Puerto Rican migrant and Latin American immigrant population in the state of Connecticut. This report analyzes “foreign-born” data, that is Puerto Rican migrants born in Puerto Rico and Latin American immigrants born outside the United States. To do this, we use microdata from the American Community Survey harmonized by IPUMS USA for the period 2000-2021.

## INCOME AND POVERTY PROFILE OF PUERTO RICAN MIGRANTS AND LATIN AMERICAN IMMIGRANTS IN CONNECTICUT

In the period between 2000 and 2021, the median family income for Puerto Rican migrants increased by 79.9% compared with 140% for immigrants from other Caribbean countries, and 80.3% for immigrants from South America, while the median family income for immigrants from Central America decreased by 7.1%. In the same period, the median poverty status increased by 24.3% for migrants from Puerto Rico, 78.7% for immigrants from other Caribbean countries, and 30.7% for immigrants from South America, while the median poverty status for immigrants from Central America decreased by 9.2%.

**Table 1: Income and Poverty Profile of Puerto Rican Migrants and Latin American Immigrants in Connecticut, 2000-2021**

	2000	2003	2005	2008	2010	2013	2015	2017	2019	2020	2021
Median family income (Thousands of US\$)											
Puerto Rican	19.8	28.1	28.0	27.3	25.9	26.9	30.0	30.0	23.0	35.0	35.7
Caribbean without Puerto Rico	28.0	55.0	42.4	44.6	45.0	33.0	30.9	40.0	48.5	41.2	67.2
Central America	55.0	45.0	40.0	37.1	40.0	40.0	36.8	44.3	52.0	61.8	51.1
South America	39.0	38.0	49.8	59.4	44.0	51.0	53.4	52.8	66.3	69.3	70.3
Median personal income (Thousands of US\$)											
Puerto Rican	12.2	13.0	15.0	14.5	11.0	12.5	15.0	12.2	14.6	17.8	17.2
Caribbean without Puerto Rico	13.3	19.0	21.1	16.6	20.0	17.0	16.0	20.0	20.0	23.4	25.0
Central America	15.0	16.0	17.1	17.0	16.0	20.0	16.0	20.0	22.0	23.2	22.3
South America	30.0	18.0	17.2	22.0	18.0	20.0	21.0	22.0	24.5	24.0	30.0
Median wage and salary income (Thousands of US\$)											
Puerto Rican	20.0	23.0	25.0	26.0	20.0	25.0	30.0	25.0	25.0	27.7	28.0
Caribbean without Puerto Rico	18.0	18.7	23.5	23.0	20.8	20.0	20.8	29.7	29.0	27.0	31.2
Central America	25.0	19.5	18.7	20.0	20.0	22.0	23.0	25.0	30.0	32.0	28.6
South America	28.0	22.0	20.0	27.0	22.0	25.0	28.0	26.0	31.2	30.0	35.4
Median poverty status											
Puerto Rican	152	183	200	148	149	140	178	142	137	181	189
Caribbean without Puerto Rico	164	263	221	240	255	181	184	221	225	194	293
Central America	240	240	227	203	225	208	198	223	228	278	218
South America	238	261	266	300	241	258	268	264	289	286	311

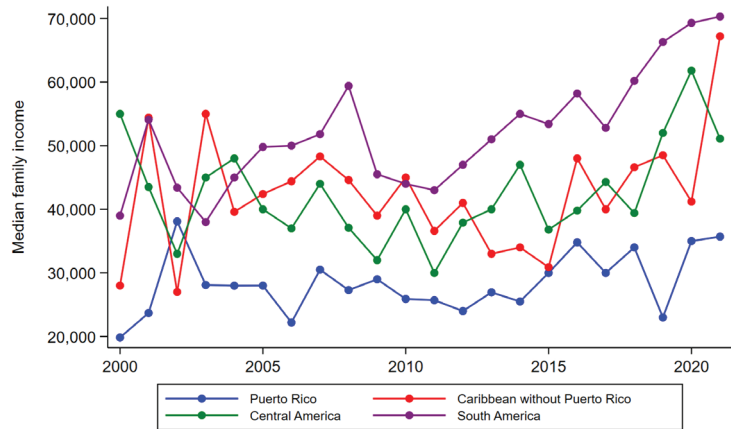
Notes: The median is the middle number in a sorted, ascending or descending list of numbers. It is the point above and below which half (50%) the observed data falls, and so represents the midpoint of the data. Poverty status takes the minimum value of 1 and the maximum value of 501 where the lower value indicates a higher level of poverty. Individuals whose family income is more than five times the appropriate poverty threshold receive a poverty status value of 501.

## TRENDS IN MEDIAN FAMILY INCOME OF PUERTO RICAN MIGRANTS AND LATIN AMERICAN IMMIGRANTS IN CONNECTICUT

The median family income of Puerto Rican migrants is the lowest in Connecticut. The median family income of Puerto Rican migrants grew from \$19,840 in 2000 to \$35,700. In contrast, the median family income of Caribbean immigrants doubled during the same period, from \$28,005 in 2001 to \$67,200 in 2021. Likewise, the median family income of South American immigrants grew from \$39,000 in 2000 to \$70,300 in 2021. However, the median family income of Central American immigrants declined from \$55,000 in 2000 to \$51,100 in 2021.

Source: American Community Survey (IPUMS USA). Own elaboration.

Figure 1: Trends in Median Family Income of Puerto Rican Migrants and Latin American Immigrants in Connecticut, 2000-2021

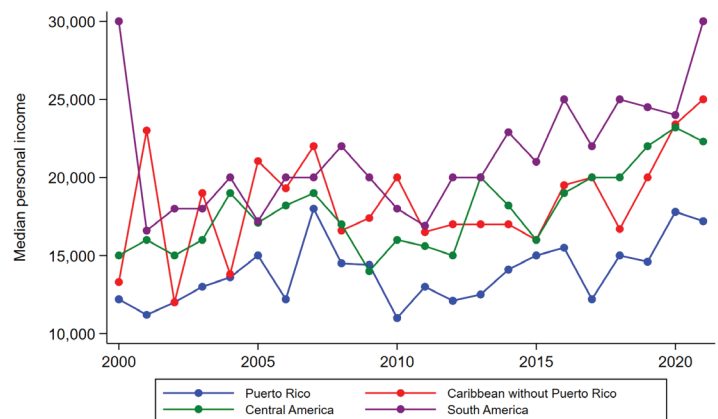


## TRENDS IN MEDIAN PERSONAL INCOME OF PUERTO RICAN MIGRANTS AND LATIN AMERICAN IMMIGRANTS

The median personal income of migrants from Puerto Rico (\$12,200 in 2000 and \$17,200 in 2021) was lower than that of immigrants from other Caribbean countries (\$13,300 in 2000 and \$25,000 in 2021), from Central America (\$15,000 in 2000 and \$22,300 in 2021), and from South America (\$30,000 in 2000 and 2021).

Source: American Community Survey (IPUMS USA). Own elaboration.

Figure 2: Trends in Median Personal Income of Puerto Rican Migrants and Latin American Immigrants, 2000-2021

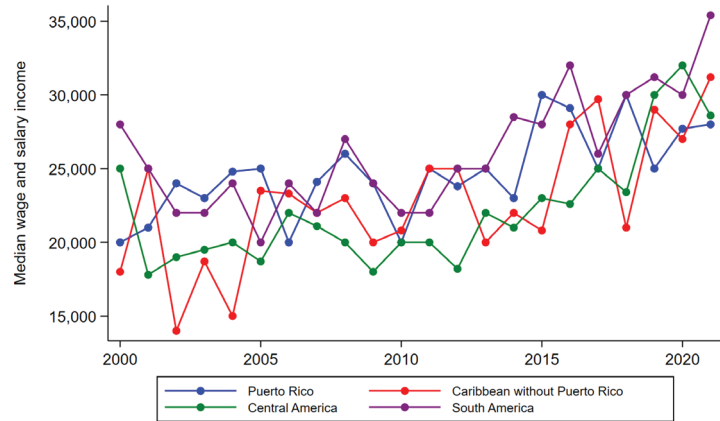


# TRENDS IN WAGE AND SALARY INCOME OF PUERTO RICAN AND LATIN AMERICAN IMMIGRANTS IN CONNECTICUT

The median wage and salary incomes of Puerto Rican migrants and Latin American immigrants in Connecticut grew at different rates between 2000 and 2021. The median wage and salary income of Puerto Ricans was the lowest during this period (\$20,000 in 2000 and \$28,000 in 2021). During this period, the median wage and salary income of Caribbean (\$18,000 in 2001 and \$31,200 in 2021), Central America (\$25,000 in 2000 and \$28,600 in 2021), South America (\$28,000 in 2000 and \$35,400 in 2021) immigrants also grew.

Source: American Community Survey (IPUMS USA). Own elaboration.

Figure 3: Trends in Wage and Salary Income of Puerto Rican and Latin American Immigrants in Connecticut, 2000-2021

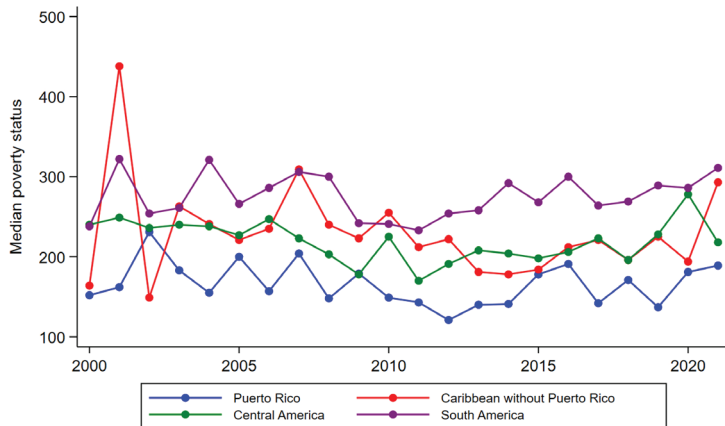


# TRENDS IN MEDIAN POVERTY STATUS OF PUERTO RICAN MIGRANTS AND LATIN AMERICAN IMMIGRANTS

Puerto Rican migrants experienced a higher poverty status than Latin American immigrants. The median poverty status of Puerto Rican migrants slightly declined from 152 in 2000 to 189 in 2021. In contrast, the median poverty rates of Caribbean (164 in 2000 and 293 in 2021), and South American (238 in 2000 and 311 in 2021) immigrants was significantly lower. However, although the median poverty rate of Central American immigrants grew during this period (240 in 2000 and 218 in 2021), it was still lower than the poverty rates of Puerto Ricans.

Source: American Community Survey (IPUMS USA). Own elaboration. Notes: Poverty status takes the minimum value of 1 and the maximum value of 501 where the lower value indicates a higher level of poverty. Individuals whose family income is more than five times the appropriate poverty threshold receive a poverty status value of 501.

Figure 4: Trends in Median Poverty Status of Puerto Rican Migrants and Latin American Immigrants, 2000-2021



## WHERE DID WE GET THIS INFORMATION FROM?

To do this, we use microdata from the American Community Survey harmonized by IPUMS USA for the period 2000-2021.

## ABOUT OUR FUNDING

The Puerto Rican Studies Initiative is funded by an American Rescue Plan Act grant awarded by the Connecticut General Assembly.

The Puerto Rican Studies Initiative for Community Engagement and Public Policy (PRSI) is a research initiative that can help document and support the Puerto Ricans' vital economic, intellectual, and cultural contributions to Connecticut and provide research-based support for the development of public policies addressing the needs of Puerto Ricans in the State of Connecticut.

This initiative is part of a collaboration between El Instituto (CLAS, UConn Storrs), the Puerto Rican and Latin@ Studies Project (School of Social Work, UConn Hartford), and the Hispanic Health Council.

El Instituto: Institute of Latina/o,  
Caribbean and Latin American Studies  
College of Liberal Arts and Sciences  
University of Connecticut  
Ryan Building  
2nd floor 2006 Hillside Road, Unit 1161  
Storrs, Connecticut 06269-1161